



Hampstead Heath, London, NW3 2TY

Asking Price £850,000





# 41 Nassington Road



## Description

A spacious and extremely bright two double bedroom, two bathroom apartment presented in excellent condition and enjoys a peaceful location within this much sought after neighbourhood, only 50 meters from Hampstead Heath.

Arranged over the second floor of a lovely semi-detached Victorian house, the accommodation comprises a master bedroom with fitted wardrobes and lovely en-suite shower room, second double bedroom with storage, additional family bathroom, and a generously sized living/dining room with wooden floors and a fully fitted open-plan kitchen, a great room with three large south facing windows that flood the room with natural light.

Nassington Road is a peaceful location and one of the area's most sought after streets with the open spaces of Hampstead Heath at the end of the road and is also very close to the amenities of South End Green including Hampstead Heath Overground Station - only a 4 minute walk, and Marks and Spencer Foodhall. Belsize Park (Zone 2 Northern Line) tube station is approximately 15 minutes' walk providing

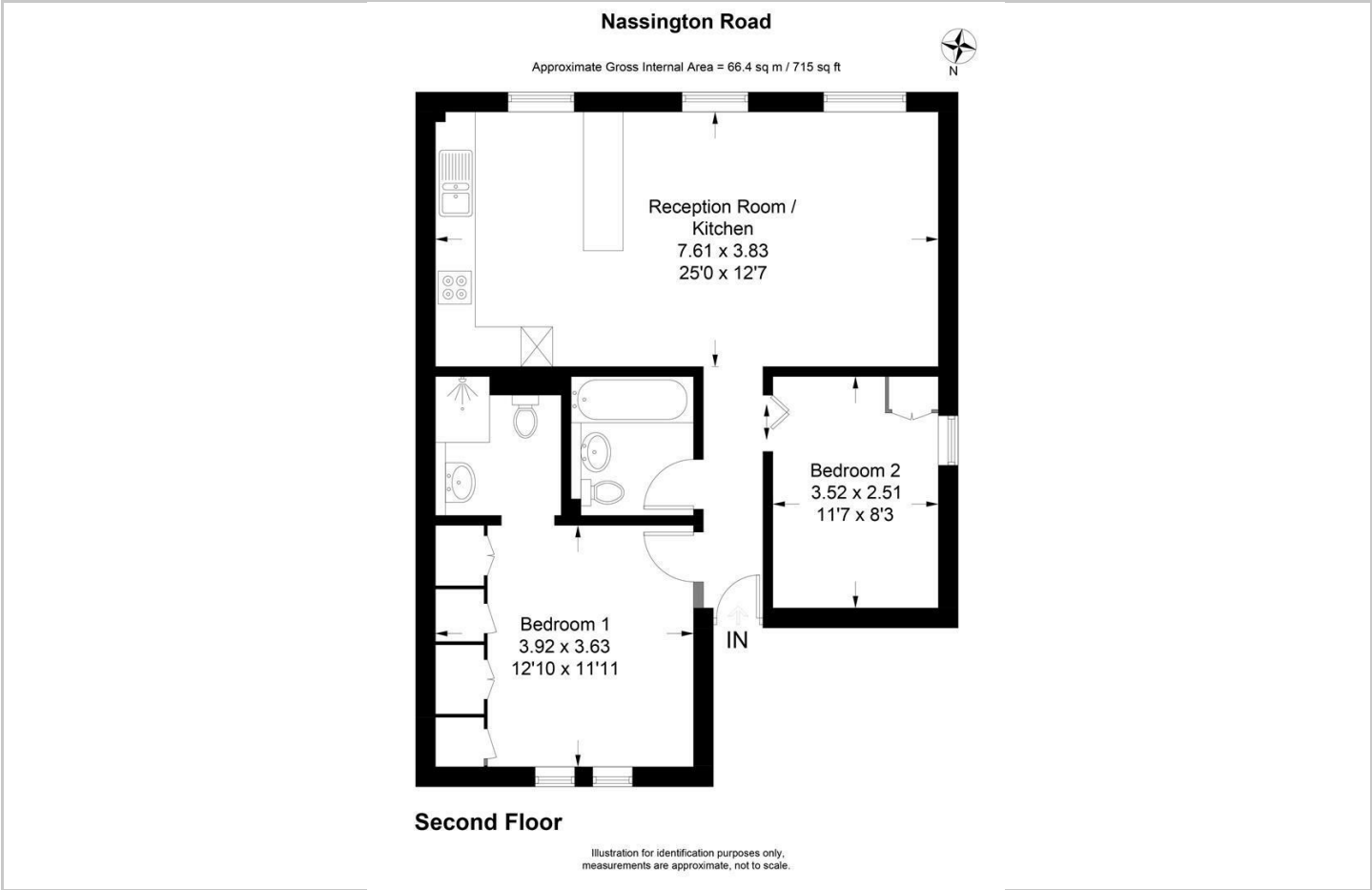
- Two Double Bedroom Apartment
- Bright and Spacious
- Wooden Floors
- Beautiful View of London Skyline
- Second Floor
- En-suite to Main Bedroom
- Easy access to Hampstead Heath
- No Onward Chain



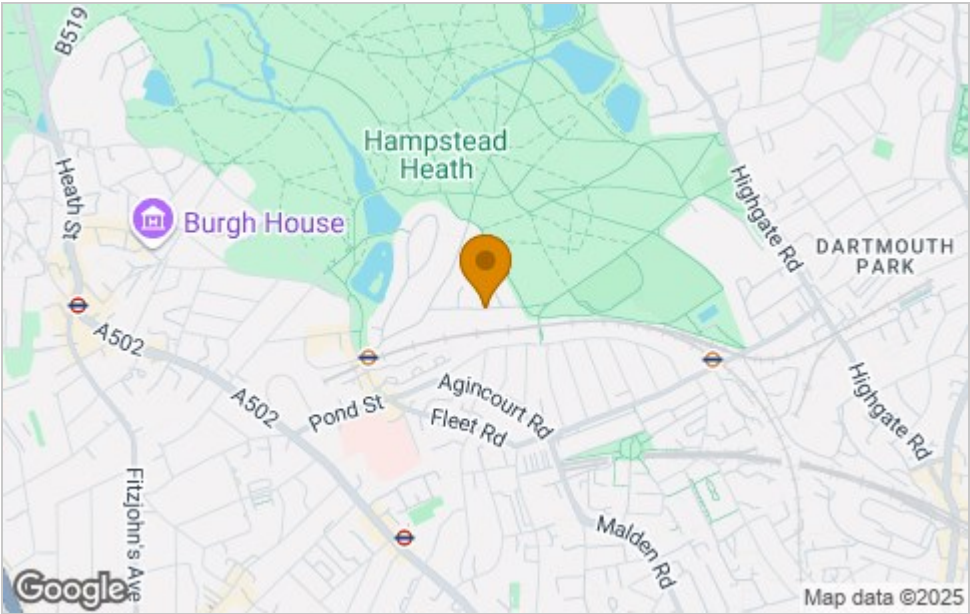




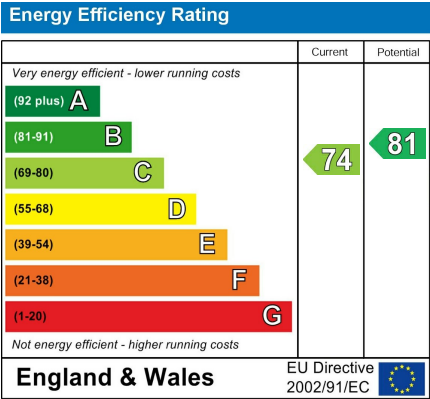
Floor Plan



Area Map



Energy Efficiency Graph



Viewing

Please contact our Hampstead Lettings Office on 020 7431 1881 if you wish to arrange a viewing appointment for this property or require further information.

These particulars, whilst believed to be accurate are set out as a general outline only for guidance and do not constitute any part of an offer or contract. Intending purchasers should not rely on them as statements of representation of fact, but must satisfy themselves by inspection or otherwise as to their accuracy. No person in this firms employment has the authority to make or give any representation or warranty in respect of the property.